

# This is David.

Lost in the music.  
Not thinking about  
his acromegaly

**PALSONIFY** helps control IGF-1 levels and symptoms so you can be in the moment.\*

David, musician,  
living with acromegaly.

\*PALSONIFY maintained or lowered IGF-1 and reduced the severity of common acromegaly symptoms in most patients in clinical studies. IGF-1=insulin-like growth factor 1.

Once-Daily Oral  
 **Palsonify**<sup>™</sup>  
(paltusotine) tablets

## What is PALSONIFY?

- PALSONIFY is a prescription medicine used to treat adults with acromegaly for whom surgery was not effective or surgery is not an option
- It is not known if PALSONIFY is safe and effective in children

## IMPORTANT SAFETY INFORMATION

The most common side effects of PALSONIFY include diarrhea, pain in your stomach (abdominal) area, nausea and vomiting, decreased appetite, slow heart rate (bradycardia), high blood sugar levels (hyperglycemia), and irregular heartbeat (palpitations).

Please see Important Safety Information throughout and Full Prescribing Information, including Patient Information.

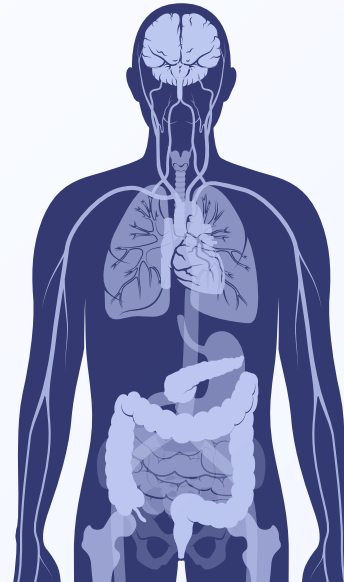
# Understanding acromegaly

## How does acromegaly affect the body?

Acromegaly is a rare condition, usually caused by a noncancerous tumor in the pituitary gland.

The tumor makes the body release too much growth hormone (GH), which leads the liver to produce too much of another hormone, insulin-like growth factor 1 (IGF-1).

Too much IGF-1 can cause body parts like your hands, feet, and face to grow slowly over time. **Eventually, high levels of IGF-1 can raise the risk of serious conditions like diabetes, high blood pressure, and heart disease.**



## What are the common symptoms of acromegaly?

Everyone's experience with acromegaly is unique. People may have different symptoms that can change over time.

### You might notice some of the following:



Enlarged hands or feet



Headaches



Tiredness or poor sleep



Facial changes



Vision problems



Deeper voice



Thicker, oilier skin



Joint pain or stiffness



Sweating



Numbness or weakness in your hands



Short-term memory difficulties

# Controlling acromegaly

## Addressing acromegaly means managing both IGF-1 levels and symptoms



### IGF-1 levels

- Doctors check your IGF-1 levels to see how your acromegaly is doing
- Keeping your IGF-1 level within the normal range is key to controlling acromegaly



### Symptoms

- Even if you have a normal IGF-1 level, you might still deal with acromegaly symptoms that impact your life. This could mean your acromegaly isn't fully controlled

## How is acromegaly treated?

**The main goal of treatment is to bring your GH and IGF-1 levels back to normal. This helps lower your risk of potential serious health problems.**

Depending on your symptoms, tumor size, and overall health, surgery may be completed to remove the tumor. Other treatment options might include medicine and/or radiation. Your doctor will help decide what works best for you.

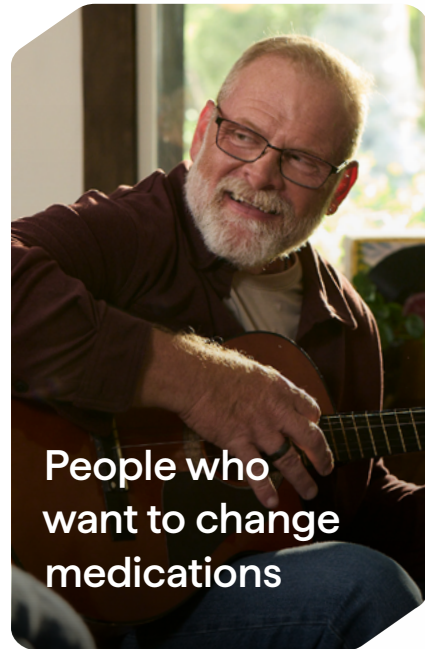
## Starting treatment early can make a big difference

Acromegaly is a rare and serious disease. It often takes years to get diagnosed and even longer to get the right treatment. Without treatment, acromegaly can lead to long-term health problems—and may even shorten your life. **That's why it's important to start treatment as soon as possible.**

# Learn about PALSONIFY

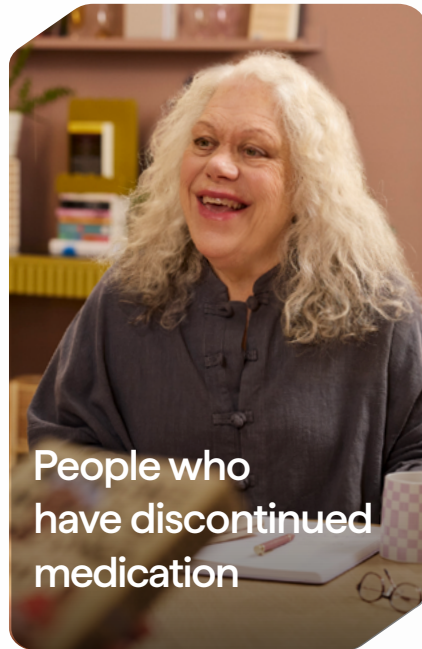


## Who is PALSONIFY for?



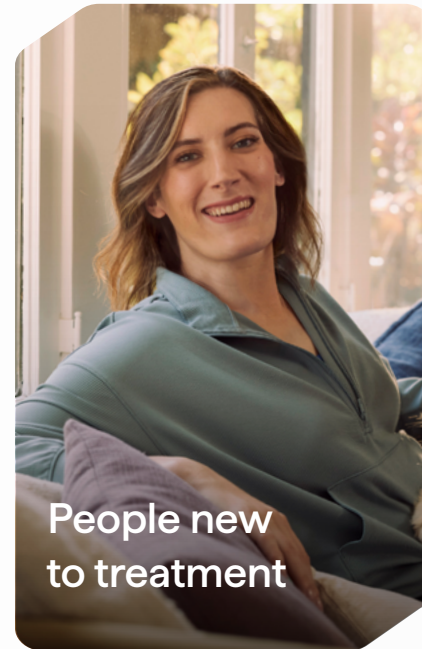
People who want to change medications

Ready for a change? PALSONIFY may help—even if injections weren't right for you.



People who have discontinued medication

Previous medication didn't work for you? PALSONIFY is different.



People new to treatment

Just diagnosed but not right for surgery? Or had surgery but still not fully controlled?

### IMPORTANT SAFETY INFORMATION (cont'd)

#### What should I tell my healthcare provider before taking PALSONIFY?

Before taking PALSONIFY, tell your healthcare provider about all your medical conditions, including if you:

- have gallbladder problems
- have blood sugar control problems (low blood sugar or high blood sugar)
- have problems with low heart rate
- are pregnant or plan to become pregnant. It is not known if PALSONIFY will harm your unborn baby.
- are breastfeeding or plan to breastfeed. It is not known if PALSONIFY passes into your breast milk. Talk to your healthcare provider about the best way to feed your baby if you take PALSONIFY.

## What does PALSONIFY do?

PALSONIFY is designed to treat acromegaly all day. It is specifically made as an oral medication that your body can absorb effectively. This helps it work continuously in your system from one dose to the next.

Powerful yet predictable, PALSONIFY is proven to:



Lower and maintain IGF-1 levels\*



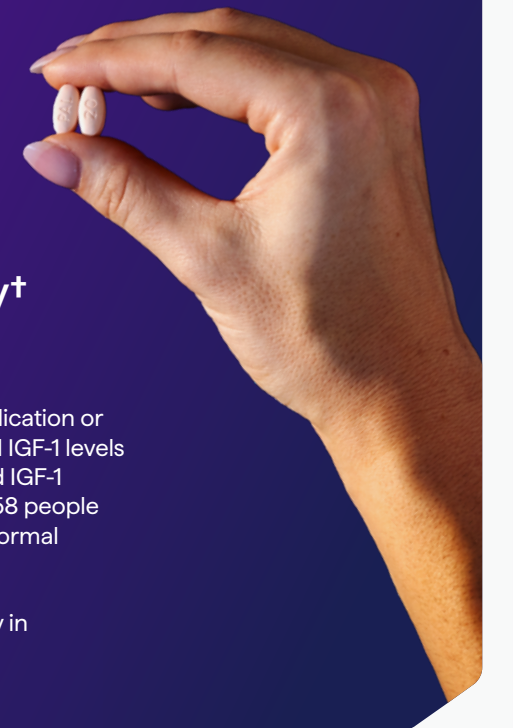
Normalize IGF-1 in 2 to 4 weeks\*



Reduce symptoms of acromegaly†

\*In a 24-week study of 111 people with acromegaly who were new to medication or restarting after a break, 56% of those taking PALSONIFY reached normal IGF-1 levels compared with 5% taking placebo. The majority of people who achieved IGF-1 normalization did so within the first 2 to 4 weeks. In a 36-week study of 58 people switching from injections, 83% of those taking PALSONIFY maintained normal IGF-1 levels compared with 4% taking placebo.

†In both studies, people taking PALSONIFY experienced reduced severity in common acromegaly symptoms.



### IMPORTANT SAFETY INFORMATION (cont'd)

**Tell your healthcare provider about all the medicines you take**, including prescription and over-the-counter medicines, vitamins, and herbal supplements. PALSONIFY may affect the way other medicines work, and other medicines may affect how PALSONIFY works.

**Especially tell your healthcare provider** if you take any medicines that can slow the heart rate.

**Please see Important Safety Information throughout and Full Prescribing Information, including Patient Information.**

# What to expect if you're switching from injections

Maintains symptom and IGF-1 control  
—without interruption

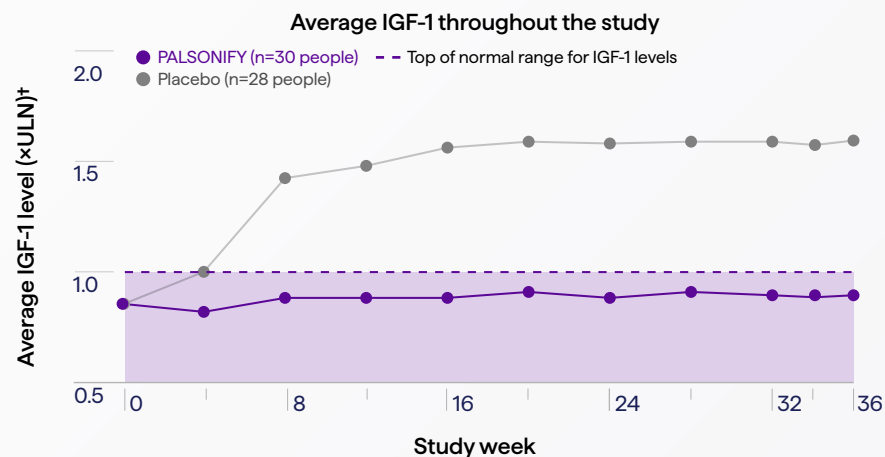
In a study, PALSONIFY helped people\*:

## Improve symptoms

People taking PALSONIFY experienced a reduction in the severity of their acromegaly symptoms—based on results from a symptom-tracking tool developed following FDA guidance called the Acromegaly Symptom Diary (ASD).

## Maintain progress

83% of people taking PALSONIFY maintained normal IGF-1 levels compared with just 4% of people who weren't taking PALSONIFY.



Throughout the study:  
On average, IGF-1 levels **stayed within the normal range** for people taking PALSONIFY

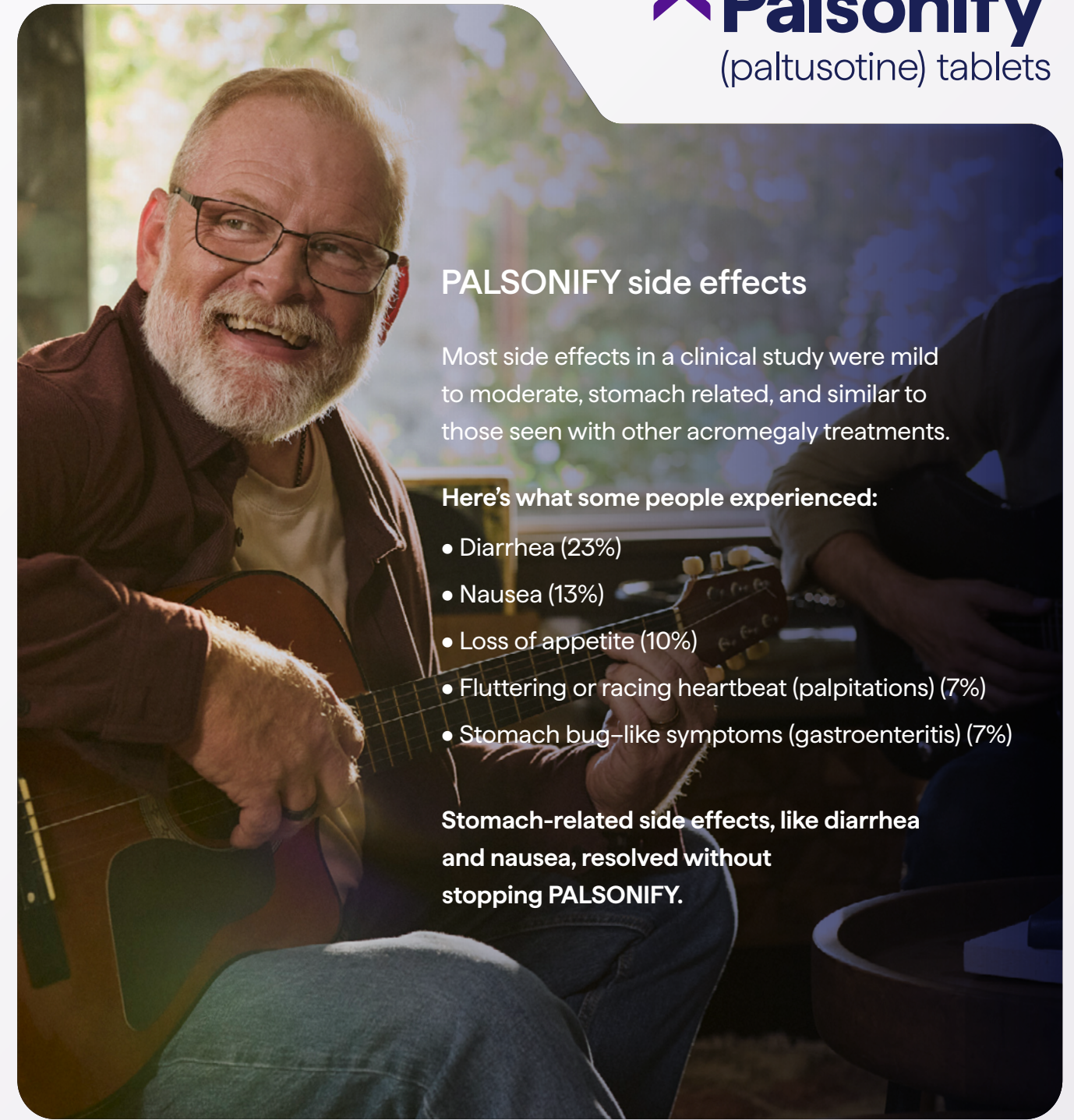
## Stay in control

**96%** of people taking PALSONIFY who had normal IGF-1 levels at the end of the study were still in control over a year later†

\*Results are from a 36-week clinical study with 58 adults who were switching from injections.

†ULN=upper limit of normal. This number marks the cutoff at the top of the normal range for IGF-1 levels on a lab test. Keeping IGF-1 levels below 1.3× the ULN is an important goal of acromegaly treatment.

‡Among people who achieved normal IGF-1 levels at week 36 in the study and completed the week-60 visit of the long-term follow-up study, 22 of 23 (96%) maintained normal IGF-1 levels at week 60.



## PALSONIFY side effects

Most side effects in a clinical study were mild to moderate, stomach related, and similar to those seen with other acromegaly treatments.

Here's what some people experienced:

- Diarrhea (23%)
- Nausea (13%)
- Loss of appetite (10%)
- Fluttering or racing heartbeat (palpitations) (7%)
- Stomach bug-like symptoms (gastroenteritis) (7%)

Stomach-related side effects, like diarrhea and nausea, resolved without stopping PALSONIFY.

## IMPORTANT SAFETY INFORMATION (cont'd)

Know the medicines you take. Keep a list of them to show your healthcare provider and pharmacist when you get a new medicine.

Please see Important Safety Information throughout and [Full Prescribing Information](#), including [Patient Information](#).

# What to expect if you're new to or restarting medication

PALSONIFY improves symptoms and quickly lowers IGF-1

In a study, PALSONIFY helped people\*:

## Experience a reduction in symptoms

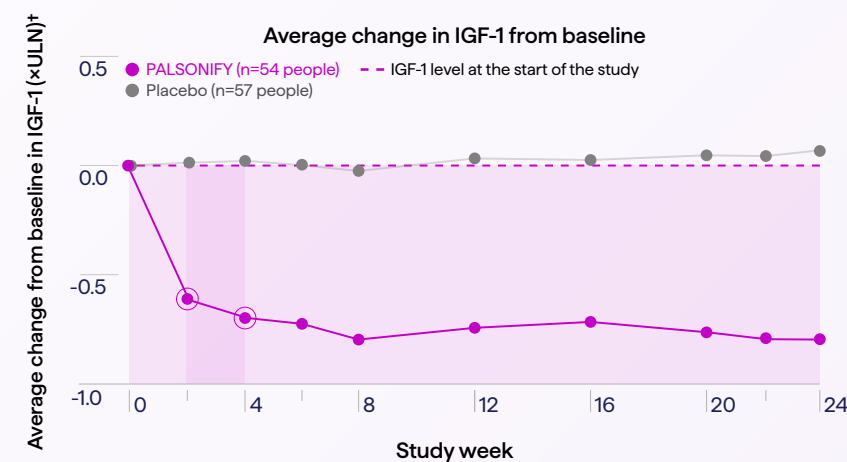
People taking PALSONIFY experienced a significant improvement in the severity of common acromegaly symptoms—based on results from a symptom-tracking tool developed following FDA guidance called the Acromegaly Symptom Diary (ASD).

## Reach treatment goals

56% of people taking PALSONIFY got their IGF-1 level down to normal compared with just 5% of people who didn't take PALSONIFY.

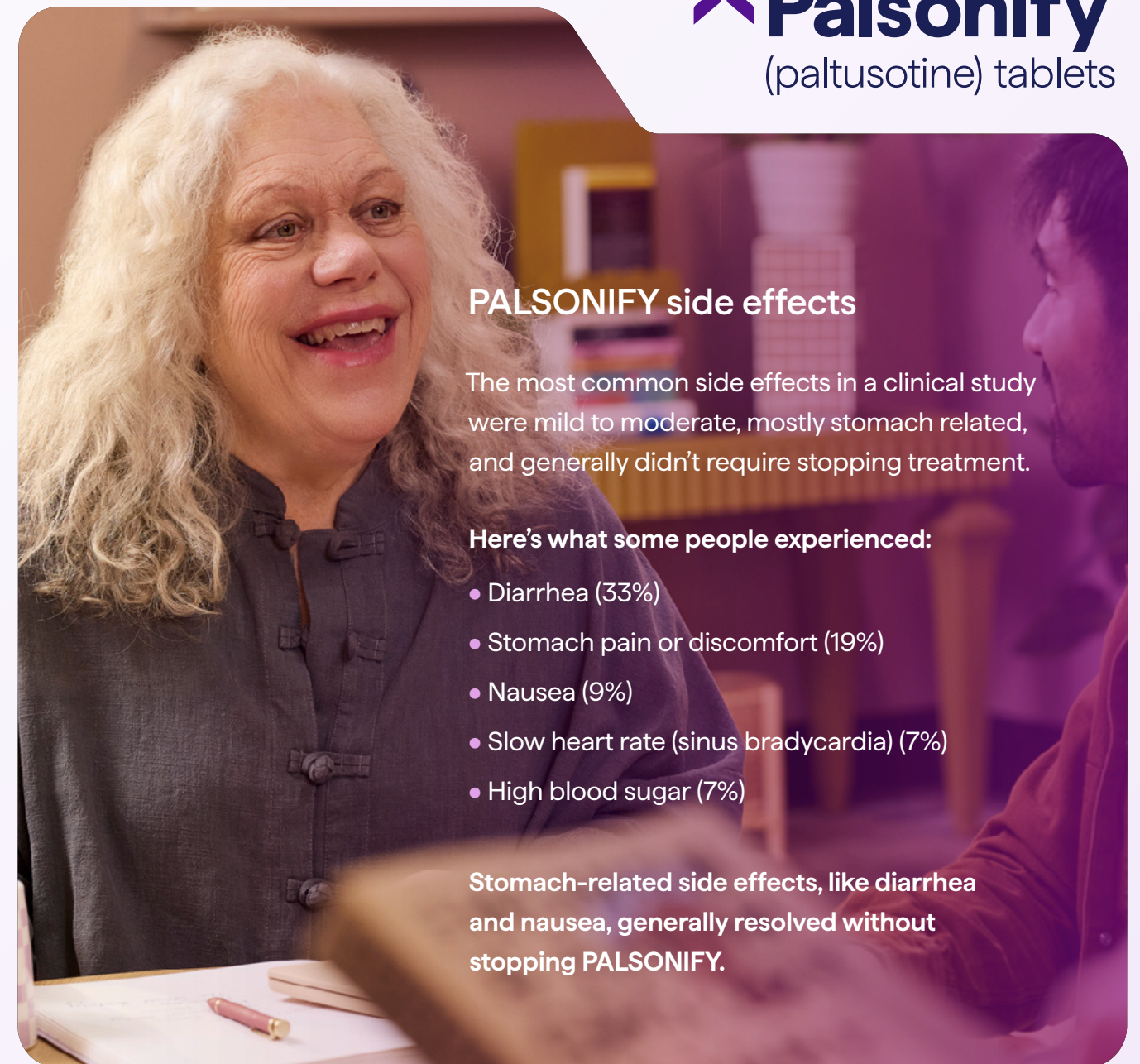
**93%** of people taking PALSONIFY experienced reductions in their IGF-1 levels

## Get control fast



PALSONIFY helped reduce IGF-1 levels in as little as 2 to 4 weeks

\*Results are from a 24-week clinical study with 111 adults who were new to medication or restarting after a break.  
 †ULN=upper limit of normal. This number marks the cutoff at the top of the normal range for IGF-1 levels on a lab test. Keeping IGF-1 levels below 1.3× the ULN is an important goal of acromegaly treatment.



## PALSONIFY side effects

The most common side effects in a clinical study were mild to moderate, mostly stomach related, and generally didn't require stopping treatment.

### Here's what some people experienced:

- Diarrhea (33%)
- Stomach pain or discomfort (19%)
- Nausea (9%)
- Slow heart rate (sinus bradycardia) (7%)
- High blood sugar (7%)

Stomach-related side effects, like diarrhea and nausea, generally resolved without stopping PALSONIFY.

## IMPORTANT SAFETY INFORMATION (cont'd)

### What are the possible side effects of PALSONIFY?

#### PALSONIFY may cause serious side effects including:

- **Gallbladder problems:** PALSONIFY may cause problems with the gallbladder. Tell your healthcare provider if you have sudden pain in the upper right area of your stomach (abdomen), sudden pain in your right shoulder or between your shoulder blades, yellowing of your skin or the whites of your eyes, or pale stools.

Please see Important Safety Information throughout and [Full Prescribing Information](#), including [Patient Information](#).

# Taking PALSONIFY

PALSONIFY is designed to treat acromegaly all day

The recommended initial dose is

**40 mg**  
once daily



Each PALSONIFY tablet is 20 mg taken together

Not actual size.

After taking **40 mg of PALSONIFY once daily for 2 to 4 weeks**, your doctor may adjust your dose to **60 mg once daily** (two 30-mg tablets) if needed

## IMPORTANT SAFETY INFORMATION (cont'd)

### What are the possible side effects of PALSONIFY? (cont'd)

- **Blood sugar problems:** PALSONIFY may change hormone levels, potentially causing either high blood sugar (hyperglycemia), including diabetes, or low blood sugar (hypoglycemia). Tell your healthcare provider if you have problems with high or low blood sugar. Your healthcare provider will check your blood sugar when you start taking PALSONIFY or when your dose is changed.
- **Heart rate problems:** Tell your healthcare provider if your heart is not beating normally.
- **Thyroid problems:** PALSONIFY may keep your thyroid from releasing thyroid hormones, leading to hypothyroidism. Your thyroid function may be checked periodically during your treatment with PALSONIFY.

Once-Daily Oral  
**Palsonify**<sup>™</sup>  
(paltusotine) tablets



### You can take it anywhere

- PALSONIFY is **2 pills taken together once a day**. Take PALSONIFY **with water, on an empty stomach** (after not eating overnight or for at least 6 hours). For example, you could take PALSONIFY before breakfast in the morning
- After taking PALSONIFY, **wait at least 1 hour before eating or drinking** anything other than water
- Take PALSONIFY at the **same time every day** to help you get the most out of your treatment



### It's designed to work with your body

- PALSONIFY is specifically made to be a once-daily oral treatment that's **absorbed efficiently through your digestive system**—unlike injections
- PALSONIFY is designed to **stay active in your body for over 24 hours**, which helps maintain a steady level of medicine throughout the day with just one daily dose
- Taking it on an **empty stomach helps your body absorb it fully**, so it works the way it's meant to



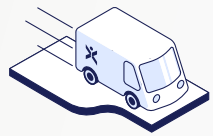
### People stick with it

- At the end of the 36-week clinical study, **more than 90% of people chose to take PALSONIFY** instead of going back to injections
- In the same clinical study, **almost everyone taking PALSONIFY stayed on track** with their treatment

Please see **Important Safety Information throughout and Full Prescribing Information, including Patient Information.**

# Ready to get started?

CrinetiCARE is here to help



## Quick start supply\*

The quick start supply helps ensure you can begin therapy without delay while the CrinetiCARE team works on securing insurance coverage.



## Copay assistance program\*

If you have commercial insurance and are not covered by any federal or government-funded program, you may be eligible to pay as little as \$0 for PALSONIFY™ (paltusotine).



## Patient assistance program\*

Uninsured or underinsured? CrinetiCARE may be able to help provide PALSONIFY at no cost to eligible patients.

\*For more information about CrinetiCARE programs, please call 844-CRN-HELP (844-276-4357).  
†Nurse educators do not provide medical advice.

# Need support?



CrinetiCARE is here every step of the way


## Healthcare provider locator

Looking for a specialist? CrinetiCARE can help you locate trusted healthcare providers and specialists in your area.

## Nurse educators†

Our experienced nurses are available to offer ongoing support and education throughout your PALSONIFY treatment journey, so you never feel like you are managing it alone.

## Contact us

 844-CRN-HELP (844-276-4357)

Available Monday to Friday,  
8 AM to 8 PM ET.



# Indication and Important Safety Information



## What is PALSONIFY?

- PALSONIFY is a prescription medicine used to treat adults with acromegaly for whom surgery was not effective or surgery is not an option
- It is not known if PALSONIFY is safe and effective in children

## IMPORTANT SAFETY INFORMATION

### What should I tell my healthcare provider before taking PALSONIFY?

Before taking PALSONIFY, tell your healthcare provider about all your medical conditions, including if you:

- have gallbladder problems
- have blood sugar control problems (low blood sugar or high blood sugar)
- have problems with low heart rate
- are pregnant or plan to become pregnant. It is not known if PALSONIFY will harm your unborn baby.
- are breastfeeding or plan to breastfeed. It is not known if PALSONIFY passes into your breast milk. Talk to your healthcare provider about the best way to feed your baby if you take PALSONIFY.

**Tell your healthcare provider about all the medicines you take**, including prescription and over-the-counter medicines, vitamins, and herbal supplements. PALSONIFY may affect the way other medicines work, and other medicines may affect how PALSONIFY works.

**Especially tell your healthcare provider** if you take any medicines that can slow the heart rate.

Know the medicines you take. Keep a list of them to show your healthcare provider and pharmacist when you get a new medicine.

### What are the possible side effects of PALSONIFY?

**PALSONIFY may cause serious side effects including:**

- **Gallbladder problems:** PALSONIFY may cause problems with the gallbladder. Tell your healthcare provider if you have sudden pain in the upper right area of your stomach (abdomen), sudden pain in your right shoulder or between your shoulder blades, yellowing of your skin or the whites of your eyes, or pale stools.

- **Blood sugar problems:** PALSONIFY may change hormone levels, potentially causing either high blood sugar (hyperglycemia), including diabetes, or low blood sugar (hypoglycemia). Tell your healthcare provider if you have problems with high or low blood sugar. Your healthcare provider will check your blood sugar when you start taking PALSONIFY or when your dose is changed.
- **Heart rate problems:** Tell your healthcare provider if your heart is not beating normally.
- **Thyroid problems:** PALSONIFY may keep your thyroid from releasing thyroid hormones, leading to hypothyroidism. Your thyroid function may be checked periodically during your treatment with PALSONIFY.
- **Fatty stools:** PALSONIFY may cause your body to have problems with absorbing dietary fats. Tell your healthcare provider if you have any new or worsening symptoms, including fatty stools, changes in the color of your stools, loose stools, stomach (abdominal) bloating, or weight loss.
- **Low vitamin B<sub>12</sub> levels in your blood:** Your healthcare provider may check your vitamin B<sub>12</sub> levels during treatment with PALSONIFY.

The most common side effects of PALSONIFY include diarrhea, pain in your stomach (abdominal) area, nausea and vomiting, decreased appetite, slow heart rate (bradycardia), high blood sugar levels (hyperglycemia), and irregular heartbeat (palpitations).

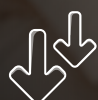
These are not all the possible side effects of PALSONIFY. For more information, ask your healthcare provider or pharmacist.

You are encouraged to report negative side effects to Crinetics Pharmaceuticals at 1-833-CRN-INFO (1-833-276-4636) or FDA at 1-800-FDA-1088 or [www.fda.gov/medwatch](http://www.fda.gov/medwatch).

**Please see Full Prescribing Information, including Patient Information, and talk to your doctor.**

# Powerful yet predictable, PALSONIFY is proven to:

Patricia, writer, living with acromegaly.



Lower and maintain IGF-1 levels\*



Normalize IGF-1 in 2 to 4 weeks\*



Reduce symptoms of acromegaly†

\*In a 24-week study of 111 people with acromegaly who were new to medication or restarting after a break, 56% of those taking PALSONIFY reached normal IGF-1 levels compared with 5% taking placebo. The majority of people who achieved IGF-1 normalization did so within the first 2 to 4 weeks. In a 36-week study of 58 people switching from injections, 83% of those taking PALSONIFY maintained normal IGF-1 levels compared with 4% taking placebo.

†In both studies, people taking PALSONIFY experienced reduced severity in common acromegaly symptoms.

Once-Daily Oral  
**Palsonify**<sup>™</sup>  
(paltusotine) tablets

## What is PALSONIFY?

- PALSONIFY is a prescription medicine used to treat adults with acromegaly for whom surgery was not effective or surgery is not an option
- It is not known if PALSONIFY is safe and effective in children

## IMPORTANT SAFETY INFORMATION

The most common side effects of PALSONIFY include diarrhea, pain in your stomach (abdominal) area, nausea and vomiting, decreased appetite, slow heart rate (bradycardia), high blood sugar levels (hyperglycemia), and irregular heartbeat (palpitations).

Please see Important Safety Information throughout and Full Prescribing Information, including Patient Information.



©2026 Crinetics Pharmaceuticals, Inc. PALSONIFY is a trademark and CrinetiCARE is a registered trademark of Crinetics Pharmaceuticals, Inc. All rights reserved.  
US-PAL-26-0069-1 04/2026